

# ASSEMBLING YOUR TELESCOPING WAND

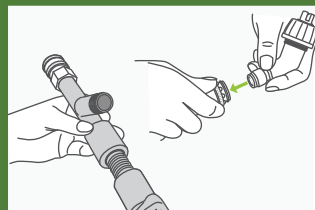
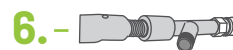
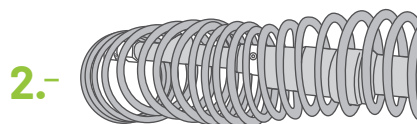
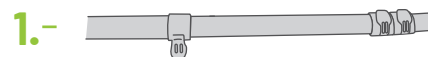
# FLOWZONE®

## PARTS

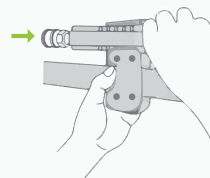
- |                               |   |
|-------------------------------|---|
| 1 Telescoping Pole            | 6 Nozzle Adaptor Fitting                              |
| 2 Coiled Hose                 | 7 45 Degree Fan Nozzle with a 45 Degree Bend (FZAANM) |
| 3 Inline Spray Gun            | 8 Mounting Plate Machine Screws (4)                   |
| 4 Mounting Plate (unthreaded) |   |
| 5 Mounting Plate (threaded)   |   |

## REQUIRED TOOLS

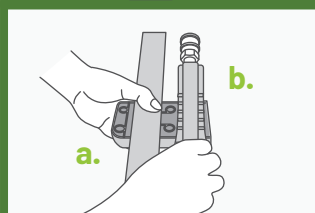
- 9 Phillips Screwdriver (Not Included)



**Step 1:** Connect the Nozzle Adaptor (6) Fitting to the top of the Telescoping Pole (1). Insert the Brass Adjustable Spray Nozzle (7) into the quick-connect adaptor

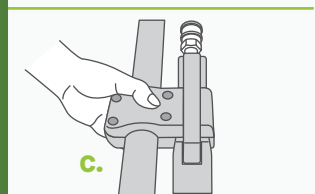


**Step 4:** Connect sprayer hose (not included in the box) to the threaded male end of the Inline Spray Gun.

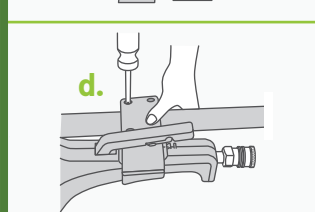


**Step 2:** Attach the Inline Spray Gun to the Telescoping Pole.

**a.** Begin by placing the spray gun Mounting Plate (threaded) (5) onto the Telescoping Pole approximately 6 inches above the bottom padded pole grip.

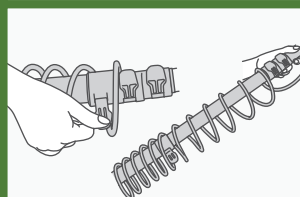


**b.** Place the Inline Spray Gun (2) into the spray gun Mounting Plate (unthreaded) (4) so that the female quick-connect adaptor is facing upwards. Note that the Inline Spray Gun position can be adjusted based on your preference.



**c.** Place the spray gun Mounting Plate (unthreaded) on top of the gun and the spray gun Mounting Plate (threaded) so that the screw holes are aligned.

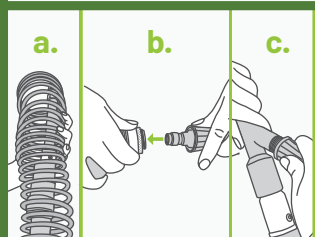
**d.** Use the Phillips screwdriver to tighten the 4 mounting plate machine screws (8).



**Step 5:** Extend the Telescoping Pole to desired length by opening each clamp and pulling the pole outwards. Repeat for each of the 3 clamps. Close the clamp after extending the pole to lock into the extended position

**Step 6:** With the sprayer turned on, squeeze the trigger on the Inline Spray Gun and wait a few seconds for the hose to fill with water and begin spraying out of the Brass Adjustable Spray Nozzle.

**Step 7:** After spraying, collapse the pole by opening the clamps and sliding the pole back into the non-extended position. Disconnect the hose from the inline spray gun and allow hose to drain before storing.



**Step 3:** Connect the coiled hose to the wand.

**a.** Slide the Coiled Hose (2) over the top of the Nozzle Adaptor fitting. (6)

**b.** Connect the Inline Spray Gun by pulling down on the brass quick-connect collars.

**c.** Connect the threaded connector cap to the Nozzle Adaptor fitting

Copyright © WESSOL, LLC  
For more information visit  
<https://fzspray.com>  
803-339-2500